



GREEN BUSINESS ALLIANCE CASE STUDY

The Center at Belvedere

AT A GLANCE

CHALLENGES

- Larger Building with Emissions Reduction Target
- Efficient but Complex HVAC System
- Need for Facility Training

BENEFITS

- Energy and emissions savings
- Improved comfort
- Professional development
- Leading by example

THE PARTNER

The Center at Belvedere is a senior activity center that works to create opportunities for healthy aging through social engagement, physical well-being, civic involvement, creativity, and lifelong learning. In 2021, they opened their brand new, state-of-the-art facility in the Belvedere neighborhood in Charlottesville.

THE CHALLENGE

The Center at Belvedere is a member of C3's Green Business Alliance (GBA). As part of their GBA commitments, they are targeting at least a 30% GHG emissions reduction by 2025. This is measured against their 2019 baseline, which was set in their old facility. So what's the problem?

First, their new building is more than 2.5x larger than their original. Second, the new building systems are much more complex!

THE SOLUTION

The Center's new facility features state-of-the-art building technology: LED lights and sensors, variable refrigerant HVAC, and a large rooftop solar array. They invested heavily in these systems knowing that reducing their climate impact is important to their mission and values.

But, as often happens in a new building, there was a lot more work needed to get the most out of it. Enter Trevor Saunders, Facility Manager. C3's Coles Jennings started meeting regularly with Trevor to discuss issues and solutions for the building's controls. With just a little bit of coaching, Trevor took the bull by the horns, setting up new routines to optimize every ounce of energy usage. The results are astounding!



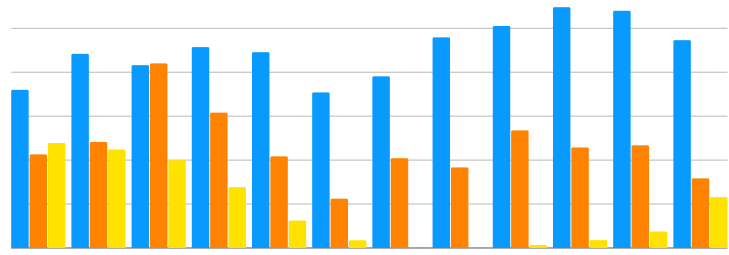
TREVOR SAUNDERS (LEFT)
FACILITY MANAGER @ THE CENTER
C3'S 2023 CLIMATE CHAMPION!

IMPACT BY THE NUMBERS:



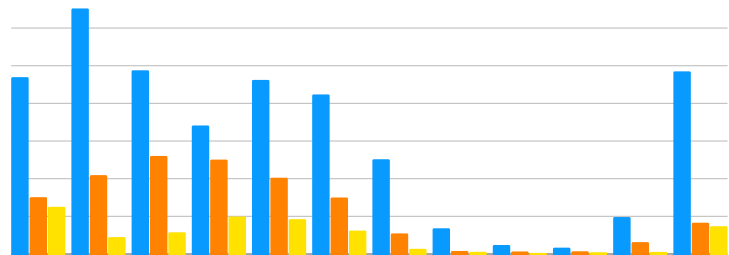
ELECTRICITY (KWH/SF)

■ 2019 (Base) ■ 2022 (New Bldg) ■ Last 12 mo.



NATURAL GAS (CF/SF)

■ 2019 (Base) ■ 2022 (New Bldg) ■ Last 12 mo.



49%
Electric Savings



50,300
kgCO2 emissions ↓



60%
Gas Savings



56%
Carbon Footprint ↓

NEXT STEPS

With such great progress on facility emissions, The Center at Belvedere is excited to expand its internal "Green Team" to build on Trevor's efforts. This will include collaborating with C3 on a Climate Action Plan, including exploring strategies like composting, EV charging, and educational programming for Center members.

CALL US! WE WANT TO HELP

If you run a business that might benefit from our climate services, including energy and emissions assessments, contact C3's Corporate Sustainability campaign at corp@theclimatcollaborative.org.

